

COMMUNITY PROFILE

CORNWALL, ONTARIO, CANADA - 2026



Access key indicators
and gain insights into
Cornwall's economy

From here you can do business anywhere

Cornwall enjoys a strategic location in Central Canada, right in the heart of a key economic triangle formed by Toronto, Ottawa and Montreal. It is conveniently situated on Highway 401, on the country's most important rail line, a key port on the St. Lawrence Seaway and an International Border Crossing to New York State. This is why Cornwall has emerged as one of Canada's most important supply chain hubs - Cornwall companies can ship products efficiently and cost effectively anywhere in North America, including international shipping ports.



Urban Centres

Connect to major international urban centres

Ottawa	1 hour	Lake Placid	2 hours
Montreal	1 hour	Boston	6 hours
Toronto	4 hours	New York	6.5 hours
Quebec	4 hours	Philadelphia	7 hours

ALL WITHIN 90 MINUTES



Two International Airports

Choose between Ottawa and Montreal



Super Highway Connections

Cornwall has 4 key interchanges on Hwy 401



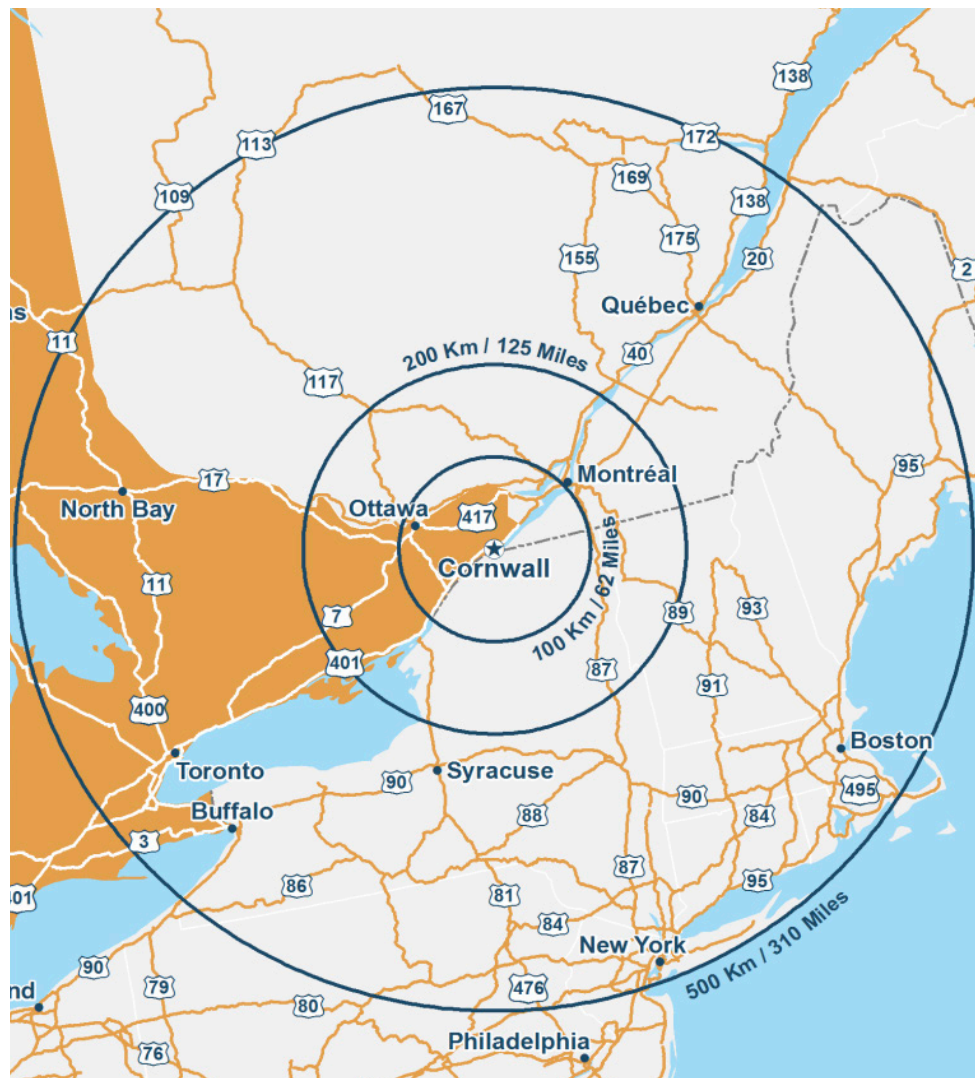
Rail Travel

CN Rail, VIA Rail and a local team track facility



Eight Universities

8 universities within 2 hours, and an additional 15+ colleges and training institutions





Le Village Business District looking west towards Downtown

Cornwall... at a glance

Located on the north shore of the St. Lawrence River in Eastern Ontario, the City of Cornwall is a historic, bilingual, and growing community, offering a low cost of living, robust logistics sector, and a scenic 40-km waterfront trail. Strategically located near the Ontario, Quebec, and US borders, Cornwall is a key hub for commerce and residential growth.

Key Community Details

Population & Demographics: The city has over 50,000 residents, with approximately 25% seniors, 59% working-age adults, and 16% children.

Geography: Situated along the St. Lawrence River, 100 km from Ottawa, 115 km from Montreal, and 170 km from Kingston.

Coordinates: 45°01'39"N 74°44'24"W

Area: 61.83 km²

Indigenous Heritage: The City of Cornwall is situated on the traditional territory of the Haudenosaunee peoples and the Mohawks of Akwesasne.

History: One of Ontario's oldest communities, Cornwall was founded in 1784 by United Empire Loyalists.

Economy & Industries: Strong sectors include logistics, manufacturing, and food processing, supported by proximity to Highway 401 and the Seaway International Bridge.

Quality of Life: Features a 40-km recreational path, numerous parks (Guindon, Lamoureux), and a vibrant arts and culture scene.

Languages: Nearly half of local residents are bilingual (English/French), well above the Ontario average.

Housing & Cost of Living: Known for affordable housing and a lower cost of living compared to larger Ontario cities.

Infrastructure: The city is expanding its business parks, supported by significant infrastructure investment.

Health Care: The Cornwall Community Hospital is a full service hospital, supported by various other clinics and medical offices.

Education: Home to 25 elementary schools, 6 secondary schools and the Cornwall Campus of St. Lawrence College.

Government: Cornwall is a single-tier municipality in Ontario, surrounded by the United Counties of Stormont, Dundas and Glengarry.

For more detailed data, residents and investors often reference the [Choose Cornwall website](#)

Demographics

Cornwall is a key population centre in Central Canada, and one of the largest urban settlements in Eastern Ontario.

The population of Cornwall reached a record 47,845 in 2021. The population is now estimated to be over 54,000. The City of Cornwall is the urban heart of the region, with a population density of over 800 persons per square kilometer. Residents live in 22,000 households, with an average of 2.1 people per household.

SDG Counties is the region that surrounds Cornwall, and is made up of six townships. 72,324 residents live in the immediate surrounding area, forming an overall population for Cornwall and the United Counties of Stormont Dundas and Glengarry of 128,617.

The Akwesasne Mohawk community, which straddles the Ontario, Quebec, and New York borders, has a total registered population of over 13,000 members. Approximately 10,000 members live on the Canadian side of the reserve, with over 3,000 people living on the American side. An estimated 3,140 live off-reserve.



	Population 2025	Change from 2020-2025
Cornwall	54,346	10.02%
South Stormont	14,602	5.23%
North Stormont	7,946	6.44%
South Glengarry	14,355	4.49%
North Glengarry	10,772	4.88%
South Dundas	11,943	5.64%
North Dundas	12,706	4.55%
Total Region	128,617	7.15%

The above figures were collected by Statistics Canada, Canada's national statistical agency.

The population of Cornwall is 54,346

REGIONAL POPULATION



Cornwall 54,346 | SDG 72,324 | Akwesasne* 1,947 | Combined 128,617

*Ontario population.

The above numbers were derived from 2025 post-census population estimates from Statistics Canada

Cornwall by the Numbers

Cornwall is a growing community with unique demographic markers and a distinct cultural presence. It is a diverse community, and while English is the predominant language, it remains a strong Francophone community. Almost half of the population can speak both official languages. 72.9% of the population is third generation or older, however recent immigration trends over the past 10 years are higher than the Provincial average.

Population



Visible Minority



Indigenous Identity



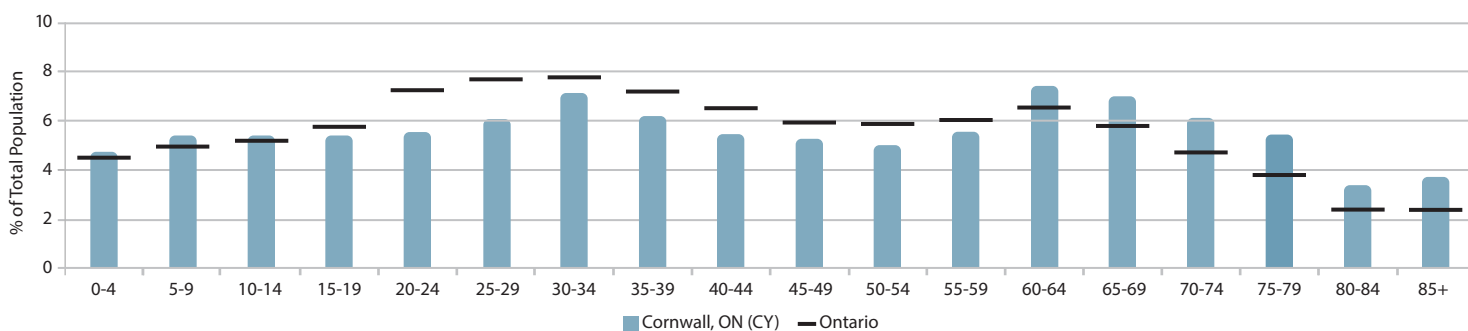
University Degree



Labour Force Participation



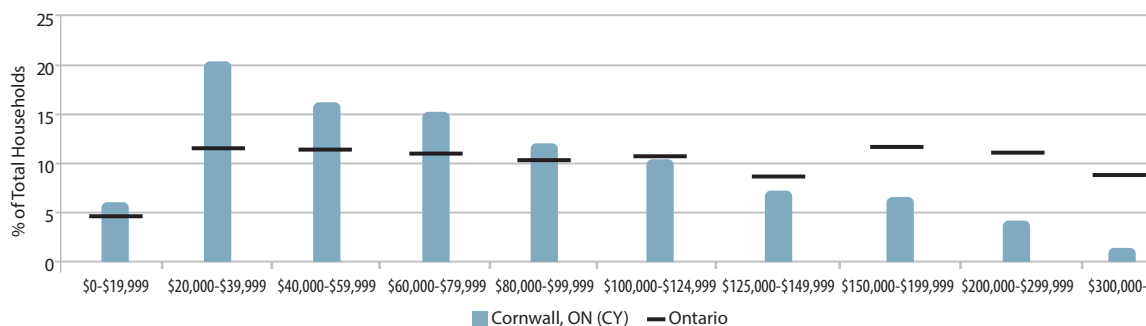
Age Cornwall's population is higher on average compared to Ontario and Canada, however that gap is shrinking.



Income On average, Cornwall has lower than average education levels and income levels compared to Ontario.



Median Hhd Income
\$69,643
Avg Hhd Income
\$84,157



Housing In Cornwall, 46.9% of residences are rented, which is higher than the provincial average. Semi-detached homes and apartment buildings with fewer than five stories are common, reflecting a diversified housing landscape. A mix of affordability, accessibility, and urban living preferences shape the community's housing choices.

Owned



53.1%

Apartments



34.3%

Homes Built After 2016



6.1%

In Condo



3.4%

Households



22,991

The above data points come from a Demographic Profile of Cornwall generated by Environics for the year 2025. As with most demographic analysis undertaken in non-Census years, the data is based on projections.

You can find the full Environics Profile on [ChooseCornwall.ca](https://www.choosecornwall.ca)

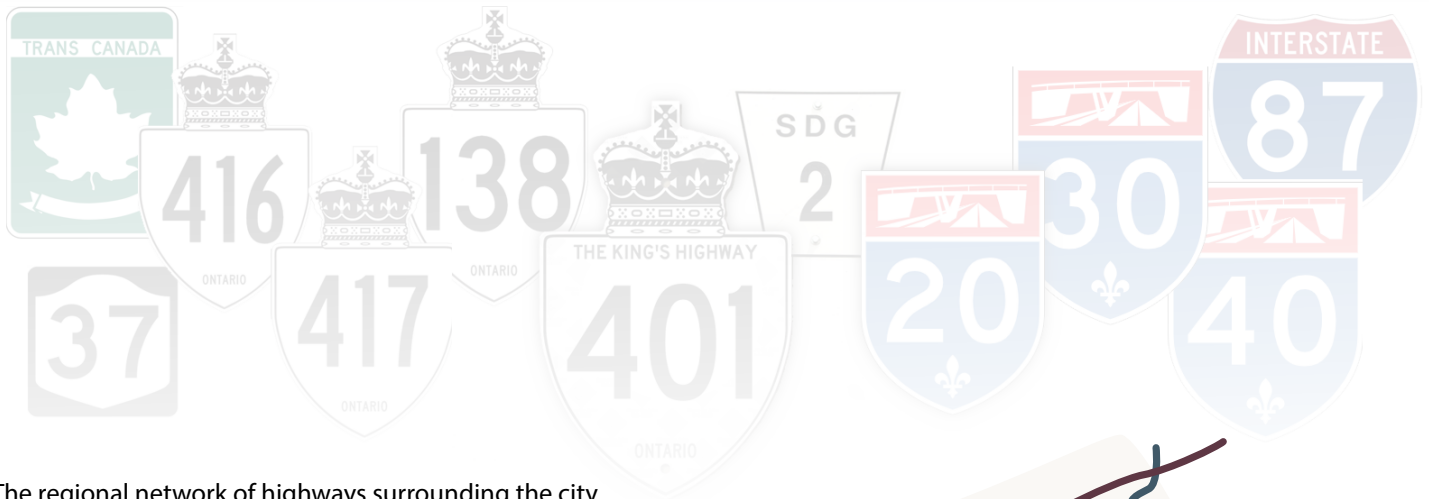
Area Highways

Cornwall is ideally situated along Canada's major east-west expressway, Highway 401, also known as the Macdonald-Cartier Freeway. Highway 401 provides direct routes to Montreal and Quebec City to the east, and Kingston, Toronto, and Windsor to the west.

Cornwall is connected to Ottawa via Highways 138 and 417 and to other communities in Eastern Ontario through a network of secondary roads, not the least of which is the scenic County Road 2, which follows the St. Lawrence River to Lake Ontario.

As a port of entry to the United States by way of the Seaway International Bridge, the City has excellent access to American markets via the New York Interstate highway system.

Cornwall is served by several transport firms which provide extensive direct service to points in Ontario, the Maritimes and the United States with connecting carriers to other U.S. points and for overseas shipments. Many of these firms provide daily or overnight service to most parts of Ontario and Quebec.



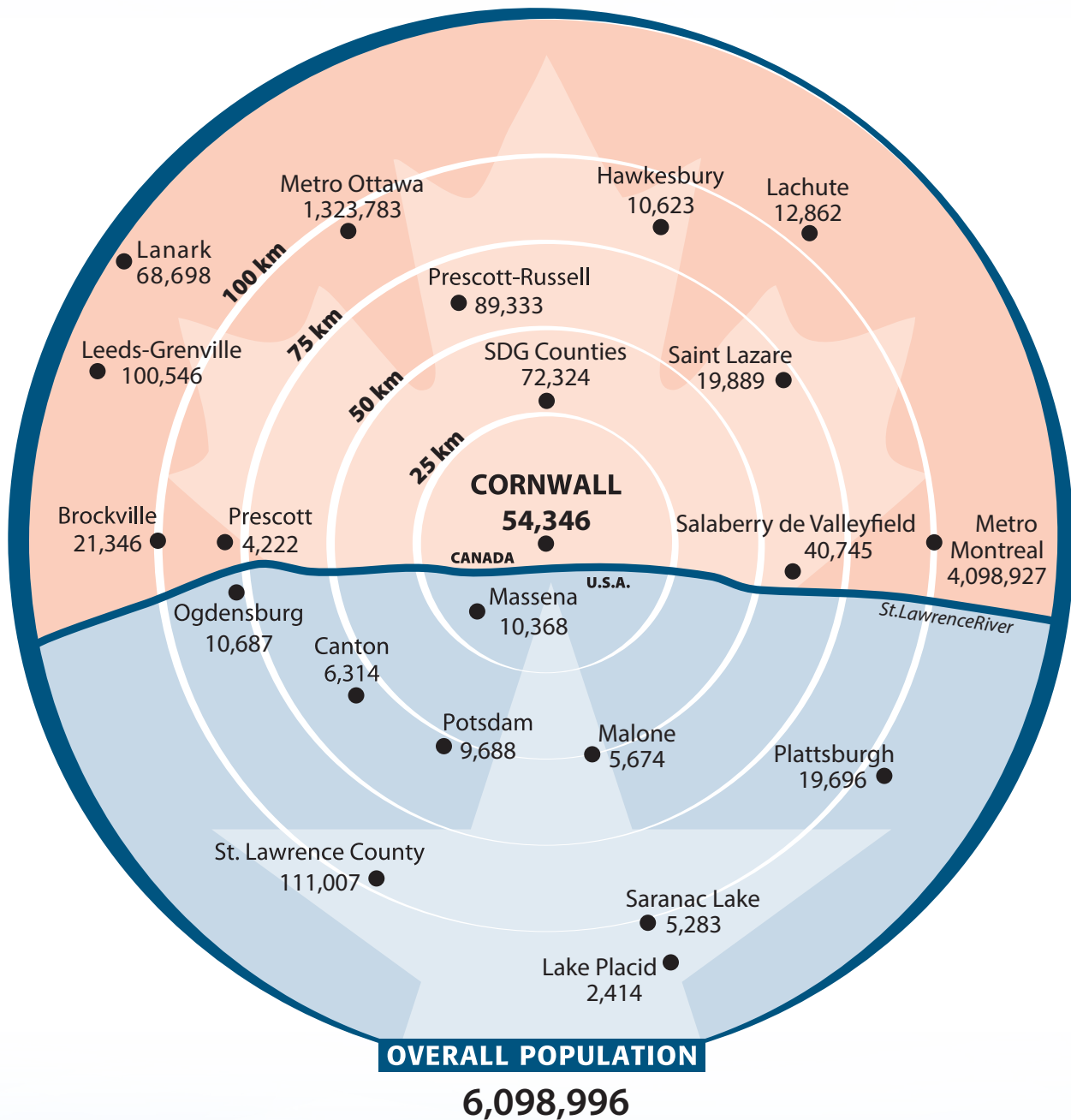
The regional network of highways surrounding the city makes Cornwall an excellent place to do business.



Regional Markets

Cornwall is close enough to be considered a satellite community of both Ottawa and Montreal, two of Canada's four largest metropolitan cities. The proximity of Cornwall to these large urban markets, along with the towns and counties in between, places Cornwall in a larger regional market with a population that exceeds 5 million.

The Metro Ottawa and Metro Montreal areas experienced high growth rates from 2006-2011, especially the Western Quebec region of Vaudreuil-Soulanges, which is immediately to the east of Cornwall. During this time period, Vaudreuil-Soulanges saw growth rates of over 15%. Cornwall is also easily accessible from the Mohawk Nation of Akwesasne and Upper New York State.



Building Success

What makes a city a good place to do business? The answer is different for every company, but there are some common elements — access to markets, an available workforce, low cost of doing business, and high quality of life. Cornwall has them all in spades. Locating in our community will give you the best chance to succeed — no matter the size of your business.

A Strategic Location

Cornwall is situated on Canada's superhighway, and is just a short drive from Ottawa, Montreal and Toronto. Whether you need to move people or goods by rail, air, or road - Cornwall connections make it easy. A Cornwall location means that over 150 million North American consumers are within a day's drive.

A Growing Talent Pool

Cornwall's workforce has always been known for its strong work ethic and unique skill set. It is also a workforce that is growing in number and character, due in no small part to graduates from St Lawrence College's wide array of post secondary courses at its Cornwall campus.

Low Cost of Doing Business

Cornwall companies enjoy a lower cost of doing business and that often starts with inexpensive real estate. Lower costs allow you to remain competitive on the North American and global stage.



Quality of Life

Residents enjoy access to natural spaces and modern recreational amenities, which create a balance between work and play.



An Open City Hall

Municipal departments such as planning, building services and municipal works have dedicated professional staff ready and willing to work with developers and companies to ensure your project gets off the ground in a timely manner with the necessary approvals.

You're in Good Company

Cornwall's business community is both welcoming and close-knit. Local companies share information and are willing to roll up their sleeves to help each other.

Start your journey with a call to Cornwall Economic Development

- ✓ We provide you with detailed information, maps and other resources to help you make informed decisions.
- ✓ We can connect you with other key people in the community that can help.
- ✓ We work closely with you to help you "get to yes" and make your plans a reality.

Success can be measured many ways — but in business it usually comes down to the bottom line. Locating in Cornwall will help you save money, be it through lower rents, a more productive workforce, or quicker access to markets. And that leads to better profits.



Real Estate Opportunities

When a company looks to establish a new operation, the first major cost hurdle is real estate. Whether your preference is to lease, buy or build, Cornwall offers a low cost solution compared to other urban centres in North America and Europe.

Site Selection Assistance

Cornwall Economic Development can help locate available properties that meet your needs. Contact us for customized information packages, property listings, and to arrange site visits. We can also help identify potential development approvals such as site plan approval and zoning and required studies (eg: environmental, archaeological, traffic studies, etc.)

Available Buildings

At any given time, there are a number of buildings with space to lease, or are available to purchase. These properties are not always listed and can therefore be easy to overlook.

Cornwall Business Park

The Cornwall Business Park is located in the eastern part of the city, immediately adjacent to Highway 401. At well over 1600 acres, the Cornwall Business Park is home to some of Canada's largest distribution centres, award-winning manufacturers and some great transportation companies. Fully serviced land in the Business Park is currently for sale at \$150,000 per acre, making it some of the most affordable land in Ontario.



For site selection assistance, please contact Cornwall Economic Development at ecodev@cornwall.ca or 613-933-0074

Site Selection Assistance

Site selection is the strategic process of evaluating and choosing the optimal location for a business facility, balancing factors like building or land availability, costs, infrastructure, and market access.

CHOOSE CORNWALL SITE SELECTION SERVICES



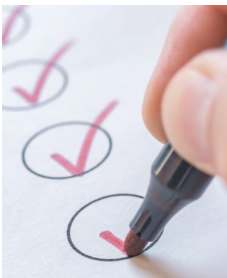
Confidential site search

City-wide site searches of available commercial and industrial properties based on project-specific requirements. Working with a refined list of project specs, we prepare a list of suitable sites.



Coordinated site tours

Coordination of site visits and introductions with realtors and/or property managers that are tailored to maximize investor needs and limited time.



Site evaluation

Evaluation of possible sites includes a review of zoning, services, environmental constraints, and other due diligence factors to determine potential costs and development timelines to minimize unforeseen delays.



Permits & approvals

Economic Development staff will help identify any required development approvals, and coordinate meetings with the City's Planning and Building Permits office.

WHY IS SITE SELECTION IMPORTANT?

It can be difficult for developers to locate and evaluate all available commercial and industrial sites. Simply put, many properties are not listed and require insider-knowledge to find. A well-managed site selection search can positively contribute to a project's critical path, reduce timelines, eliminate uncertainty and prevent unnecessary expenditures. Investors typically value the following factors when making a site selection decision:



Site Location, Quality and Availability of Infrastructure



Site Cost



Talent Quality and Availability



Business Ecosystem



Community Quality of Life

SITE SELECTION TRENDS

The following are current trends from developers looking to invest in commercial and industrial properties.



Size

Land: 10-50 acre greenfield sites
Existing buildings: 50,000- 300,000 sq.ft.
High ceiling height



Transportation

Within 2km of a major highway
Ideally adjacent to highway
Rail spur line a bonus



Services and Zoning

Available municipal services
Proposed use is permitted in zone



Power

15-30MW power demand
Green power



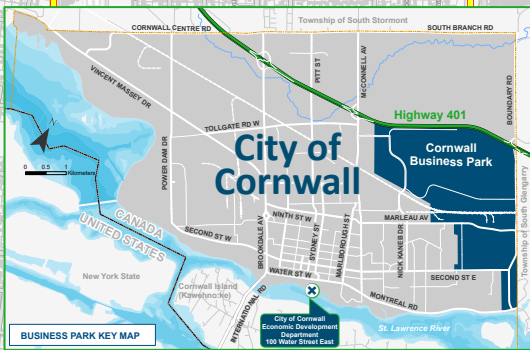
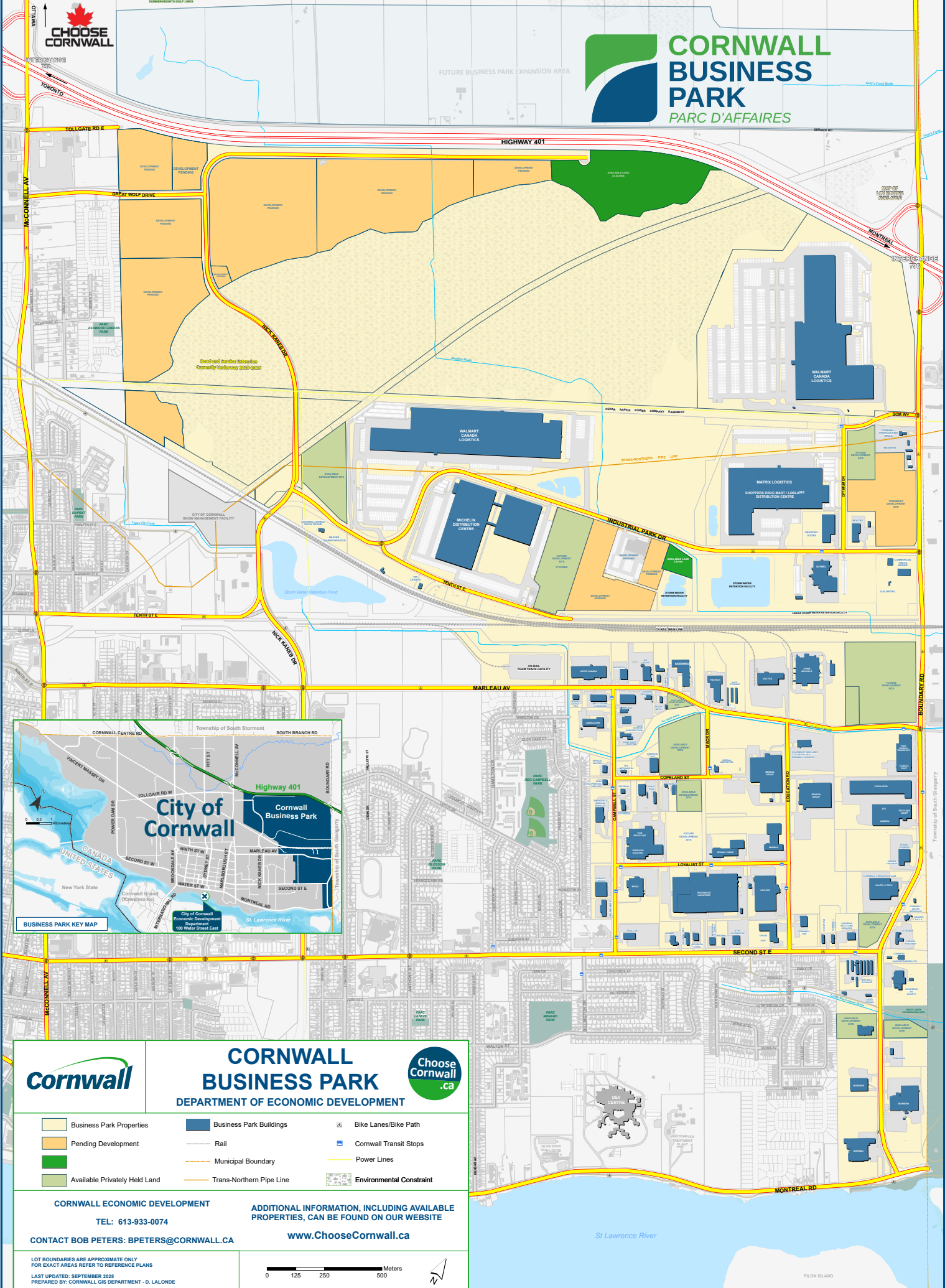
Location

Near urban centers
Close to supply chain partners
Close to education institutions



CORNWALL BUSINESS PARK

PARC D'AFFAIRES



CORNWALL BUSINESS PARK
DEPARTMENT OF ECONOMIC DEVELOPMENT

Choose Cornwall .ca

CORNWALL ECONOMIC DEVELOPMENT
TEL: 613-933-0074
CONTACT BOB PETERS: BPETERS@CORNWALL.CA

ADDITIONAL INFORMATION, INCLUDING AVAILABLE PROPERTIES, CAN BE FOUND ON OUR WEBSITE
www.ChooseCornwall.ca

LOT BOUNDARIES ARE APPROXIMATE ONLY FOR EXACT AREAS REFER TO REFERENCE PLANS
LAST UPDATED: SEPTEMBER 2023
PREPARED BY: CORNWALL GIS DEPARTMENT - D. LALOUE

0 125 250 500 Meters

- | | | |
|-------------------------------|--------------------------|--------------------------|
| Business Park Properties | Business Park Buildings | Bike Lanes/Bike Path |
| Pending Development | Rail | Cornwall Transit Stops |
| Available Privately Held Land | Municipal Boundary | Power Lines |
| | Trans-Northern Pipe Line | Environmental Constraint |

Business Landscape

For the past century and a half, Cornwall companies have helped change the world — a role that continues to this day. Cornwall's economy has also changed significantly and today, the City boasts vibrant logistics, food processing and manufacturing operations, in addition to strong service and retail sectors.



Advanced Manufacturing

Cornwall's manufacturing sector remains an important economic contributor, able to find niche markets through innovation, efficiency, and production quality.

Leading businesses:

Morbern, Laframboise, Laminacorr, BASF, Johns Manville, Xactics, IPG, Axalta, Olsonfab



Logistics

Cornwall has emerged as one of Canada's key supply chain hubs, in part due to the city's strategic location on Highway 401.

Leading businesses:

Walmart, Michelin, Loblaw, Shoppers Drug Mart, Benson, Ryder, Minimax, Seaway Express, IFS, TTL



Food Processing

Cornwall is a good place to grow a food processing business, with major recent investments in the sector.

Leading businesses:

Olymel, Leclerc Group, Lallemand, Fieldless Farms, Zip Grow, Rurban Brewery



Defence

Cornwall is home to a number of industries that has supplied the defence sector, in addition to being home to two Canadian Armed Forces bases, CFSACO and CAFCYBERCOM.

Leading businesses:

Nautel C-Tech, Kontron, Timila, Seaway Yarns, DEV Centre

For a directory of most major businesses in Cornwall, please visit [ChooseCornwall.ca](https://www.choosecornwall.ca)

Entrepreneur Ecosystem

Entrepreneurs need access to the right tools, expertise, and networks to succeed. Cornwall's business eco system brings together a diverse range of organization dedicated to supporting startup and established companies alike. We encourage business owners to connect with and leverage the breadth of resources available across our region.



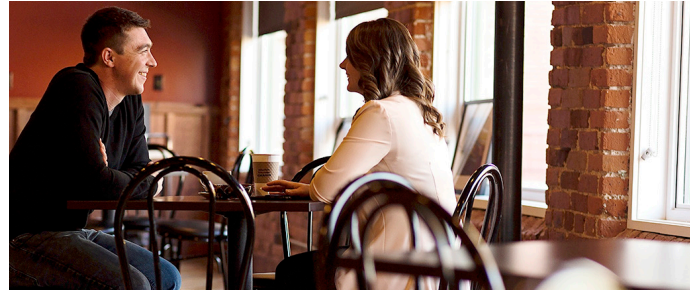
Business Enterprise Centre

One-stop shop for entrepreneurs looking to start or grow a small business in Cornwall, SDG and Akwesasne. The Centre provides a variety of services, including free one-on-one business consultations, seminars, events and more.

Offerings

- Free Consultations
- Starter Company Plus
- Summer Company

www.BusinessEnterpriseCentre.ca



Chamber of Commerce

The voice of small business in Cornwall, with over 100 years of business advocacy. Connects members through networking, promotion, and strong representation through key business issues.

Offerings

- Membership Directory
- Business Events
- Business Excellence Awards

www.CornwallChamber.com



ACCFutures

Funded by FedDev Ontario, this office provides business consultation and access to funding. It offers strategic advice and flexible financing to help businesses grow and innovate.

Offerings

- Consultations
- Debt Financing
- Equity Financing

www.ACCFutures.com



Cornwall Construction Association

A business organization representing the local development community, including developers, builders, contractors, plumbers, electricians, and tradespeople.

Offerings

- Advocacy
- Seminars and Education
- Membership Directory

www.CornwallConstructionAssociation.com

Contact the Cornwall Business Enterprise Centre as a first step. 613-933-0074



Brownfield Program

Brownfields are abandoned, vacant, derelict or underutilized commercial and industrial properties, where past actions have resulted in actual or perceived contamination. The City of Cornwall has a number of programs to help developers revitalize brownfield sites, all under the Brownfield CIP Program.

Rehabilitation Tax Increment Grant

The developer pays the full cost of redevelopment as well as the annual increase in property tax which results. The City then reimburses (or rebates) the developer an annual grant equivalent to all or part of the municipal portion of tax increase.

Environmental Site Assessment

Assistance is provided to specify the extent of contamination through partial funding of an Environmental Site Assessment (Phase 2 or 3). Funding is available on a matching basis for 50% of study costs, to a maximum of \$15,000.

Project Feasibility Study

Assistance is provided to determine the feasibility of the project. Eligible studies include traffic impact analysis, concept drawings and market feasibility. Funding is available on a matching basis for 50% of study costs, to a maximum of \$7,500.

Property Tax Cancellation Assistance

This program provides assistance to landowners by removing the cost of property taxation. There are added opportunities to have a combined cancellation of both municipal and education portions of tax over a predetermined time period.

Planning / Development Fees Rebate

This program is designed to assist developers by rebating up to 100% of municipal planning and development fees.

Discretionary Municipal Tipping Fees Grant

Assistance is provided to developers through the reduction of tipping fees related to removal and disposal of non-hazardous material at the City landfill site.

Payment-in-Lieu of Parkland Dedication Program

This program exempts a landowner from providing a cash-in-lieu payment for parkland dedication purposes.



CASE STUDY	
Location	910 Montreal Road
Size	0.41 acres
Notes	Priority site identified, historical gas station operational for over 55 years, building demolished and tanks removed by owner, and then became vacant for a few years. Developer remediated with a Record of Site Condition posted on February 11, 2019. New residential tower, 12 floors 160 units
Developer	Swimko Construction



The \$32 million Benson Centre was developed on reclaimed brownfield lands. The sports facility features 3 NHL sized rinks, an indoor field house and tennis court.

For further information on Heart of the City and Brownfield programs, please contact:

Ms. Dana McLean, Economic Development Officer
 Tel.: 613-930-2787 ext 2105
 dmclean@cornwall.ca



Heart of the City helped Shawn Maloney of Miller Hughes Ford Lincoln renovate his dealership.

Heart of the City Program

Cornwall's Heart of the City initiative supports revitalization projects that occur in the central core, or "Heart of the City". These areas include the downtown business district (Pitt Street and adjacent roadways) along with the Le Village shopping district.

The Heart of the City program has a number of tools to help landowners undertake property improvements, with a special focus on aesthetic improvements, and the upgrading and renovation of commercial properties and ancillary residential units.

Rehabilitation Tax Increment Grant Program

The landowner is reimbursed part or all of the increase in municipal taxes paid as a result of improvements made to a building. The grant allows for a reimbursement, on a sliding scale, in part or in full for up to 10 years (based upon each individual case).

Building Restoration & Improvement Program

A landowner receives a loan, either forgivable or, interest-free, to help with interior improvements to buildings for 50% of the total cost to a maximum of \$30,000.

Project Design Study Grant

A landowner is provided a grant of 50% of the cost of such things as feasibility studies or concept drawings to a maximum of \$7,500.

Facade Improvement/Sign Grant

A grant can be available to assist with improvements to a building facade or for new signage. Funding is based on 50% of the costs to a maximum of \$10,000 for facade work and \$2,000 for new signage.

Municipal Planning/Development Fees Grant

A landowner upgrading or re-developing a property can receive full reimbursement for such items as an Official Plan/ Zoning Amendments and Building Permits.

Discretionary Municipal Tipping Fees Grant

A developer is given a reduction in the cost of dumping nonhazardous waste at the municipal landfill site. The grant is for 50% of the assigned fee with a total dollar amount as determined by the City.

Municipal Costs

Business owners and developers can connect with staff at various City departments to facilitate an efficient pathway to development projects. While the first stop is often Economic Development, other City departments can be contacted directly to address specific development approval processes.

Planning: Dedicated planning staff oversee the Site Plan Approval process, and can answer questions regarding land use, zoning and other development approvals such as minor variances and severances.

Building Permits: If you're building, demolishing, or making significant changes to a building, you will need a building permit. The Building division can ensure that your projects meet fire and structural safety standards.

Development Charges

Development Charges are applied to new construction and help fund improvements and expansions to the municipality's infrastructure

Industrial, commercial and institutional	\$4.58 per square foot
---	------------------------

Planning Fees

Planning fees, where appropriate, offset the professional review of development applications

Site Plan Approval	\$2,060 + \$410 per hectare
---------------------------	-----------------------------

Official Plan Amendment	\$4,410+ \$150 per hectare
--------------------------------	----------------------------

Zoning Bylaw Amendment	\$5,740 + \$240 per hectare
-------------------------------	-----------------------------

Minor Variance	\$670 to \$2,580
-----------------------	------------------

Cash-in-lieu of Parking	\$4,180 per space
--------------------------------	-------------------

Severance	\$1,900 to \$2,210
------------------	--------------------

Parkland Dedication

Parkland dedication fees are applied to new construction and help fund improvements to the municipality's parks and recreation facilities

ICI	2% of raw land value
------------	----------------------

Residential:	\$820 per new lot
---------------------	-------------------

Municipal Works: The professional engineering staff at Municipal Works can confirm the capacity of municipal services to your property and address other issues such as transportation.

It is highly recommended that you contact city staff for a pre-consultation meeting before you begin any new project. The following information provides a quick overview of some of municipal costs that may apply to your project:

Building Permits

Building permit fees are based upon construction value and are used to help pay for the professional review and inspection of development applications

Residential	\$3,157 + \$1.87 s.f. over 1400 s.f.
--------------------	--------------------------------------

Multi-residential	\$2,768 + \$1.87/s.f. over 1000 s.f.
--------------------------	--------------------------------------

ICI	\$20.62/\$1,000 for first \$3 M, \$15.49/ \$1,000 over \$3 M
------------	---

Taxes

Municipal taxes are calculated by multiplying the tax rate by the assessed value of the property. As part of this process the City also collects education taxes

	Industrial	Commercial	Residential
City Rate	4.62%	3.41%	1.757%
Education rate	0.88%	0.88%	0.15%
Total Rate	5.50%	4.29%	1.91%

Water and Wastewater

Water and wastewater charges are used to offset the costs of maintaining Cornwall's services infrastructure

Water	\$0.9897 per cubic metre (metered)
--------------	------------------------------------

Wastewater	\$1.4047 per cubic metre (metered)
-------------------	------------------------------------

The above information is provided for information purposes only. Developers are encouraged to contact City officials for the complete and current rate schedule. Pre-consultation meetings for development approvals are strongly encouraged.

For more information please visit the City of Cornwall's website www.Cornwall.ca



YOU'RE IN GOOD COMPANY

Cornwall is home to hundreds of innovative, progressive companies.



Snapshot

Some fun numbers that provide insight into life in Cornwall.

Nearly
**42% of
Cornwallites
are bilingual**
(English/French)



18 km
of traffic free
cycling trails along the
St. Lawrence River

Cost of acre
of industrial land:
\$150,000

Over
**5 million
square feet**
of dedicated
distribution space

Cornwall electricity is
**100%
renewable**

Average house
sale price:
\$500,000

Cornwall is
242 years old
(126 years older than
Canada, 42 years older
than Ottawa)

Over
**50,000
people**
call Cornwall home
(highest population total ever)

Increase in visitors:
26%

Typical commute:
10 minutes
(7 minutes to
get across town)

0% increase
in electrical costs
this year

Over
**3 million
people**
live within a 90 minute
drive of Cornwall

Utility Connections

In many cities, development constraints can impair a company's ability to accommodate investment and growth. Cornwall has planned for the future offering modern municipal services throughout most of its developed area. The City has excess capacity in its water, wastewater and landfill facilities, and

maintains a local road network that allows for efficient movement of traffic across town. Cornwall is also well served by a variety of electrical, natural gas and telecommunication networks that have been developed to meet today's needs as well as those of tomorrow.



Water / Wastewater

Most properties in Cornwall are fully serviced with the municipal robust distribution of water and wastewater services. The city maintains excess capacity in both systems. Cornwall draws its water from the St. Lawrence River. The water is treated using modern water purification methods. The Wastewater Treatment Plant utilizes both primary and secondary treatment systems. Businesses are expected to meet effluent limits established in the City's sewer use by-law.

www.Cornwall.ca



Electricity

Electrical rates in Cornwall are amongst the most affordable in North America, and can be as much as 10-25% below other Ontario communities. Cornwall is served by Cornwall Electric, which sources its power from Hydro Quebec, making it a green source of energy and resulting in a positive impact on the calculation of carbon tax credits. Cornwall Electric can provide a formal estimate of electrical costs once supplied with detailed consumption figures.

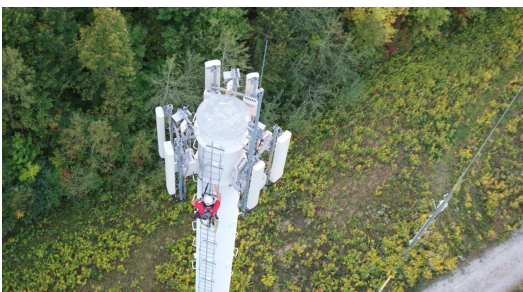
www.cornwallelectric.com



Natural Gas

As a clean-burning fossil fuel, natural gas plays an important role in worldwide energy demand and is a resource that is readily available in Canada. Natural gas is supplied through the Trans-Canada Pipeline from Western Canada and distributed in Cornwall by Enbridge. Line size and pressure in the city varies according to the size and needs of the customer. Enbridge rates in Cornwall are comparable to other Ontario municipalities.

www.Enbridge.com



Telecommunications

Cornwall is well served by a modern and robust digital communications network as Canada's telecommunications "super highway" runs right through Cornwall. Local businesses enjoy a wide range of cellular and high-speed internet connection options from a variety of service providers.

www.bell.ca

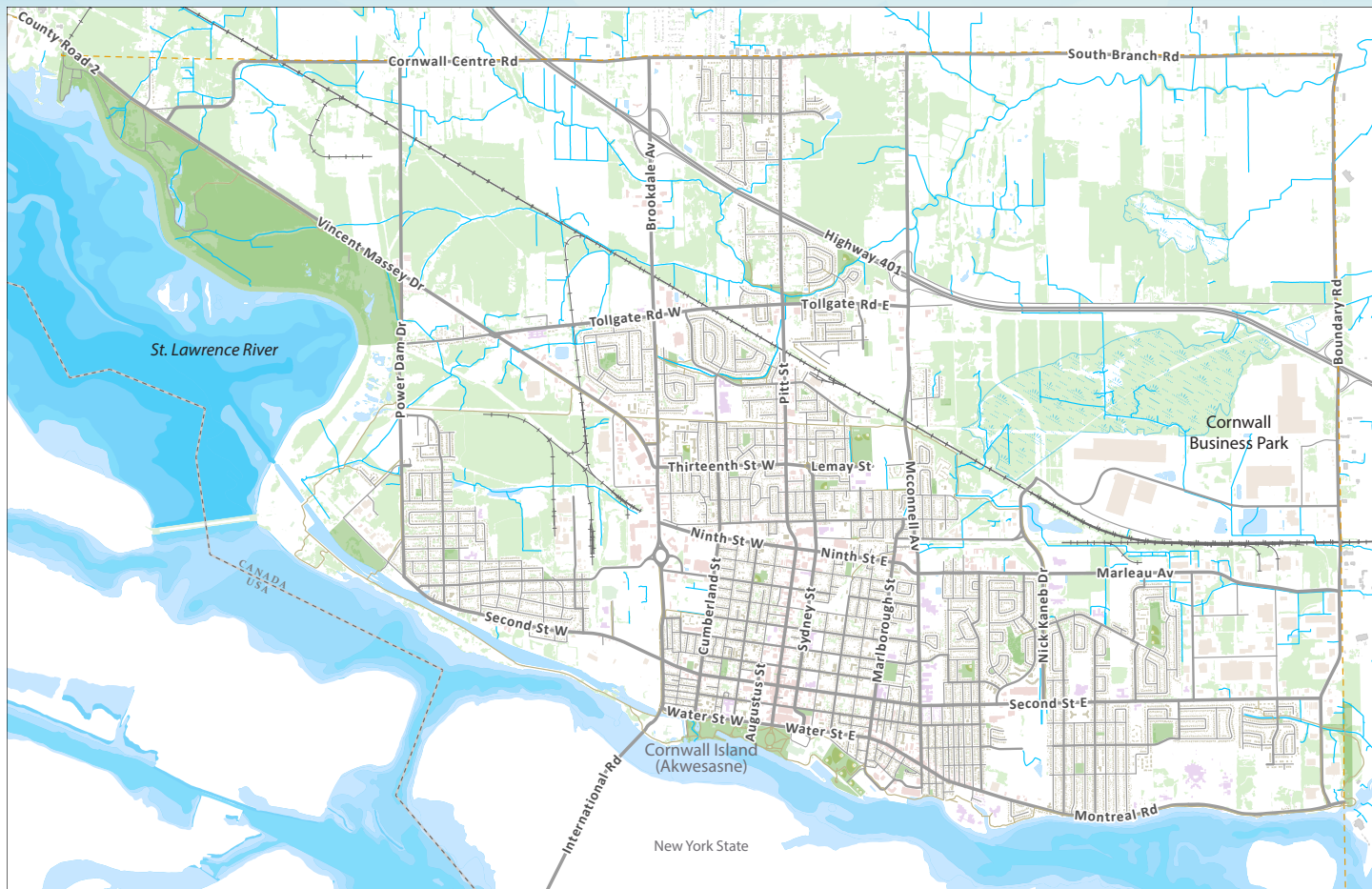
www.rogers.com

www.tvcogeco.com

www.ontarioeast.net

Map of Cornwall

Nothing quite paints the picture of a city than a map.



Downloadable Maps

Cornwall Economic Development has you covered when it comes to maps, be it a general map of the city, a traffic count map, a map of the Cornwall Business Park or even a map of the popular Riverside Trail. Maps are available to download from ChooseCornwall.ca.

Interactive Maps

The City of Cornwall maintains a gallery of interactive maps via the official City website. Maps are prepared by our Geographic Information Services (GIS) department and are automatically updated. There are a variety of layers that you can turn on and off such as zoning or services, and a variety of base maps that you can choose from, including topographical or aerial photography. You can also view special interest maps such as Cornwall Transit routes, neighbourhood parks and trails, and historical aerial photography. Explore the maps at www.Cornwall.ca

For more information please visit the
City of Cornwall's website at www.Cornwall.ca



In Cornwall, you can have it all!

You'll find everything you need to enjoy an exceptional quality of life, where everything is just minutes away from your front door and new opportunities wait around every corner!



ARTS & CULTURE

The arts scene in Cornwall is vibrant and engaging, with dozens of fantastic concerts, festivals and exhibitions held throughout the year. From world-class musicians, to exciting theatre and thought-provoking visual arts, culture is alive and well along the St. Lawrence.



RECREATION

Cornwall offers countless opportunities to be active year-round, be it cycling, hiking, boating or organized sports. Dozens of parks and recreational facilities are popular with both local and visiting athletes, including the multi-purpose Benson Centre.



HEALTH CARE

Cornwall is home to a modern full-service hospital with state-of-the-art equipment and hundreds of healthcare professionals. Residents are further supported by medical, dental and other clinics across the city. You are never far from the assistance you need.



SCHOOLS

Children in Cornwall benefit from quality education in 25 elementary schools and 6 secondary schools with options for instruction in English and French. Our schools offer a safe and friendly environment with robust opportunities for extracurricular activities.



ST. LAWRENCE COLLEGE

St. Lawrence College offers a diverse lineup of programs across a variety of disciplines, including skilled trades. The Campus is nestled on the banks of the St. Lawrence River, along with the River Institute and Aultsville Theatre.



CORNWALL TRANSIT

Our transit system provides effective and efficient service to nearly 900,000 passengers annually. The fleet of modern buses operates on a half-hour service, and a bus stop is never more than a short walk away.



LOWER COST LIFESTYLE

The cost of living in big cities like Toronto or Vancouver impacts the quality of life for many young Canadians. In Cornwall, the rent for a one-bedroom apartment starts at \$1,000 a month, while the average cost of a house is just over \$500,000.



COMMUNITY CONNECTIONS

Cornwall offers a chance to connect with neighbours, be it for business or pleasure. We are a modern city with small community charm, where anyone can quickly build a network of colleagues and friends.



EMPLOYMENT OPPORTUNITIES

Cornwall is growing and we have a wide variety of jobs available in every sector. If you are looking for work in logistics, health care, manufacturing, or education, we guarantee one of our employers is looking for you.





Accommodation Providers in Cornwall

From modern hotels to inexpensive motels for charming short term-rentals, Cornwall accommodation providers offer 1,236 rooms. We have just what you are looking for, in a home away from home.

Best Western Parkway Inn 97 rooms 1515 Vincent Massey Drive	Martin's Inn 14 rooms 2200 Vincent Massey Drive
Century Motel 24 rooms 1209 Brookdale Avenue	Monte Carlo Motel 23 rooms 1700 Montreal Road
Chesley's Inn 6 rooms 40 First Street West	Motel 6 35 rooms 1142 Brookdale Avenue
Comfort Inn 118 rooms 1625 Vincent Massey Drive	Nites Inn 18 rooms 2120 Vincent Massey
DEV Centre 529 rooms 1950 Montreal Road	Ramada Hotel 112 rooms 805 Brookdale Avenue
Elect Inn 5 41 rooms 1123 Brookdale Avenue	Regency Inn & Suites 15 rooms 1620 Vincent Massey Drive
Fairview Inn 12 rooms 2020 Vincent Massey Drive	Super 8 Cornwall 50 rooms 2694 Brookdale Avenue
First Canada Inns 22 rooms 1618 Vincent Massey Drive	Air BnB 40 rooms Various locations
Hampton Inn 80 rooms 1757 Vincent Massey Drive	

For more information on available accommodations, including options in the surrounding townships, please visit Cornwall Tourism at www.CornwallTourism.com





CHOOSE CORNWALL

If you are looking to invest, take a closer look at Cornwall.

With affordable electrical rates, low cost real estate and a welcoming business community, Cornwall gives you the best possible chance to succeed.

Learn more about development opportunities by contacting Cornwall Economic Development. Visit us online for current business news, available real estate and local job postings.

Bob Peters

Manager, Economic Development
613-551-6715
bpeters@cornwall.ca

www.ChooseCornwall.ca

